

iwata

by ANEST IWATA

Airbrush Cleaning Kit

Illustrated step-by-step instructions to clean and maintain your airbrush

Have a great airbrush experience every time you spray by cleaning your airbrush regularly and before paint dries.

Do a quick paint flush (step 1) between color changes.

If you're ending a paint session complete steps 1 and 2.

Proceed with steps 3-8 if your airbrush is clogged, spraying unevenly or to prevent paint build-up.

1 PAINT FLUSH - DO BETWEEN COLOR CHANGES AND AT THE END OF A PAINT SESSION

For Gravity Feed Airbrushes:

1a. Remove cup lid (if present) and dump out excess paint from color cup.



1b. Alternate between using the Iwata Washing Brush with Medea Airbrush Cleaner (or appropriate cleaner) and wipe the cup out.



1c. Spray the cleaner or water through the airbrush until it sprays clear. Spray into a spray out pot or paper towel.



For Siphon Feed Airbrushes:

1a. Remove paint bottle from bottom of airbrush.



1b. Fill a clean bottle (not included) with Medea Airbrush Cleaner (or appropriate cleaner) and attach it to the airbrush.



1c. Spray the cleaner or water through the airbrush until it sprays clear. Spray into a Spray Out Pot or paper towel.

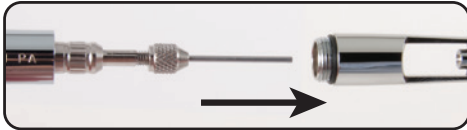


For a quick paint flush use the Medea Airbrush Cleaner With 360 Nozzle (not included).

Continue airbrushing with a new color. If ending an airbrush session, move on to step 2.

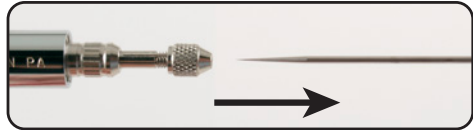
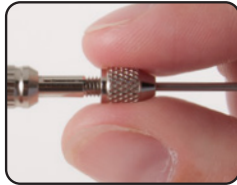
2 REMOVE AND CLEAN THE NEEDLE

Disconnect the airbrush from the air source.



2a. Unscrew and remove the back handle. Place your handle on a safe surface such as the Iwata Airbrush Cleaning Mat with its raised ridge which keeps parts from rolling away.

2b. Loosen the needle chucking nut by hand.



2c. Pull the needle out. *Needles are extremely sharp and delicate. Be careful not to drop or damage your needle while cleaning.*

2d. Clean the needle with a small amount of Medea Airbrush Cleaner by wiping only towards the sharp needle point. *Only wipe the needle in a back to front direction so as not to puncture yourself.*



If your airbrush is clogged, spraying unevenly or to prevent paint build-up:

Leave the airbrush disassembled. Place the needle on a safe surface like the Iwata Airbrush Cleaning Mat and continue on to steps 3-8.

If you are ending an airbrush session:

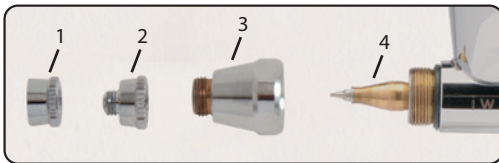
Gently push the needle back into place. The needle is fully seated when it comes to a complete stop. Tighten the needle chucking nut. Reassemble the airbrush and connect your air source. To make sure your needle is fully seated, fill the color cup or a bottle with water and push the main lever down only to test for air. If water sprays out your needle is not fully seated. Water should only spray when you pull the trigger back (turn the fluid adjustment knob if single-action airbrush). Tighten the needle chucking nut if no water sprays. If not working properly, check assembly and go through all of the cleaning instructions.

3 REMOVE THE NOZZLE

To reveal the nozzle (4), unscrew the needle cap (1) and nozzle cap (2) by hand. For the Iwata Eclipse airbrushes, remove the nozzle head cap (3) with the nozzle head cap wrench (included with the airbrush).

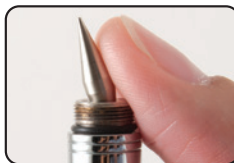
For Iwata Eclipse airbrushes (compression fit nozzle):

The nozzle (4) for the Eclipse BS, SBS and CS is a set and SHOULD NEVER BE SEPARATED.

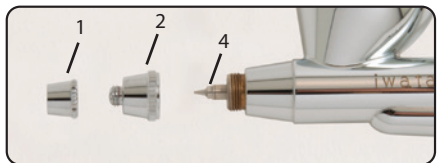


DO NOT USE the Iwata Nozzle Wrench on compression fit nozzles.

3a. The nozzle is compression fit into the airbrush body. To remove, press against body of nozzle at an angle. Check inside the nozzle head cap if nozzle appears to be missing. Use the blunt end of the needle to remove.



For airbrushes with a threaded nozzle:



3a. Place the Iwata Nozzle Wrench* over the flat sides of the threaded nozzle base and turn left to unscrew.



**For use with Custom Micron, Hi-Line, High Performance Plus, Revolution and NEO (not TRN1/TRN2) airbrushes.*

4 CLEAN THE NOZZLE AND CAPS

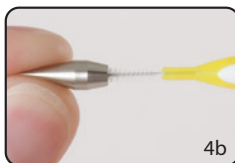
4a. To loosen paint, soak your nozzle, needle cap, nozzle head cap (if compression nozzle) and nozzle cap in Medea Airbrush Cleaner (or solvent) for NO MORE than 10 minutes.

! NEVER soak your entire airbrush in any liquid. NEVER store your airbrush with spray medium or cleaning agents in the fluid cup.

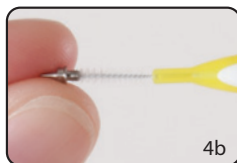
4b. Using an extra small cleaning brush dipped in Medea Airbrush Cleaner, scrub your nozzle, needle cap, nozzle head cap (if compression nozzle) and nozzle cap.

! Nozzle contains Nickel.

Compression Fit Nozzle:



Threaded Nozzle:

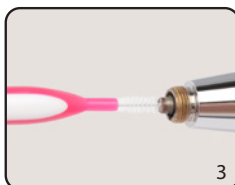


5 CLEAN THE PAINT PASSAGE

5a. Dip an extra small cleaning brush or pipe cleaner into a small cup of Medea Airbrush Cleaner.

5b. For gravity feed airbrushes, push cleaning brush down into the color cup paint passage towards the front of the airbrush (1). For siphon feed airbrushes, push pipe cleaner or cleaning brush up into bottle joint, deep toward the front of the airbrush (2). Scrub back and forth, twisting in and out. Repeat until there is no paint debris on the brush or pipe cleaner.

5c. Use the cleaning brush or pipe cleaner dipped in Medea Airbrush Cleaner to clean the paint passage from the front of the airbrush (3 and 4). Clean until there is no paint debris on the brush or pipe cleaner.



6 CHECK PARTS AND PASSAGE FOR DAMAGE AND PAINT DEBRIS

The Iwata LED Magnifier has 2 levels of magnification plus white and blue LED lights. Use it to:



1. Look at your nozzle for cracks or dents or to check for distortion.



2. See if you have a bent needle.



3. Check for paint debris inside airbrush paint passages.

If parts are damaged you will need to reorder that specific part. Contact your Iwata retailer to order. If you are airbrushing often, you may want to have an extra needle and nozzle as these parts can be damaged easily.

7 CLEAN THE OUTSIDE OF YOUR AIRBRUSH

Clean the outside of your airbrush with a small amount of Medea Airbrush Cleaner. Use a pipe cleaner dipped in Medea Airbrush Cleaner to clean tight areas where paint can build up.



8 SEAL THREADS AND REASSEMBLE THE AIRBRUSH

Apply Medea Thread Sealer to nozzle threads and nozzle/head cap threads after deep cleaning and as needed to keep seals air-tight and prevent sticking.

For Iwata Eclipse airbrushes (compression nozzle):

8a. Lightly dab Medea Thread Sealer against 4 opposite sides of the head cap threads ONLY, located on the airbrush body. Careful to keep sealer away from the air and paint passageways.



8b. Place nozzle into airbrush head base. Screw on head cap and gently tighten with head cap wrench. **Do not over tighten.**

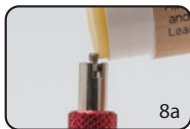


8c. Lightly dab Medea Thread Sealer against 4 opposite sides of nozzle cap threads ONLY, located on the airbrush head cap. Careful not to allow sealer to enter the interior of the airbrush head. Screw the nozzle cap and needle cap back on finger tight.



For airbrushes with a threaded nozzle:

8a. Lightly dab Medea Thread Sealer against 2 opposite sides of the nozzle threads. Careful to not allow sealer to enter the interior of the nozzle.



8b. Screw the nozzle back onto the airbrush with the Iwata Nozzle Wrench. **Make sure nozzle is snug. Do not over tighten.**



8c. Lightly dab Medea Thread Sealer against 4 opposite sides of nozzle cap threads ONLY, located on the airbrush body. Careful not to allow sealer to enter the interior of the airbrush head. Screw the nozzle cap and needle cap back on finger tight.



OPTIONAL LUBRICATION: Iwata Lube is not necessary every time you clean your airbrush.

If your main lever is slow to rise, lubricate the air valve O-ring:

Make sure handle and needle are still removed from the airbrush.



Depress main lever and pull back, apply only one drop of Iwata Lube to the base of main lever stem. Store airbrush upright 12 hours for best results.

Move onto 8d.

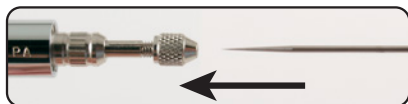
If your main lever does not move backward and forward smoothly, lubricate the needle packing:

Make sure handle and needle are still removed from the airbrush.



Place only one drop of Iwata Lube where the taper of the needle begins and spread evenly around tapered edge.

Move onto 8d.



8d. With main lever depressed, gently re-insert the needle so as not to damage the sharp tip. The needle is fully seated when it comes to a complete stop. **Do not use excessive force.**



8e. Tighten the needle chucking nut by hand to hold needle in place. Do not over tighten.



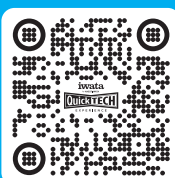
8f. Screw the handle back on to the airbrush.

9 TEST YOUR AIRBRUSH

Once reassembled, connect your air source, fill the color cup or a bottle with water and push the main lever down only to test for air. If water sprays out your needle is not fully seated. Water should only spray when you pull the main lever back (turn the fluid adjustment knob if single action airbrush). Tighten the needle chucking nut if no water sprays. If not working properly, check assembly and go through all of the cleaning instructions.



Scan the code for cleaning videos and simple airbrush solutions



iwata Medea
by ANEST IWATA

www.iwata-airbrush.com

AIRBRUSH SELECTOR | PARTS FINDER | LET'S GET STARTED